

Advanced Session 2023!

Arrowbear Information Packet

July 16-29, 2023



Thank you for choosing to make us a part of your summer.

We can't wait to see you!

~The Arrowbear team~

Packet Contents:

- Pre-camp Checklist..... p. 1
- Arrival and Departure Information..... p. 1
- Directions to Camp..... p. 1
- Tuition Balance..... p. 2
- Medication Information..... p. 2
- General Camp Information..... p. 2-3
 - communication policies
 - photos and group roster (the 'note')
 - snack bar and camp store
 - sleeping arrangements
 - visiting policies
- Packing List..... p. 4

Information at a glance:

- Camp office phone: 909-867-2782
- Larke's cell phone: 562-225-7766 (ok to text)
- July 11th: session balance and health form must be finalized
- July 16th: see email body for your check in time.
- July 29th: Pick up day-5pm concert
- Camp's physical address 33500 Music Camp Rd., Arrowbear lk, CA 92382
- Camp's mailing address: PO Box 180, Running Springs, CA 92382

Pre Camp Checklist

- Balance and scholarships finalized by July 11th
- Packing list double checked
- Online Health Form finalized by July 11th
- Online medication list up to date by July 11th - contact the camp if medication instructions change
- Medications properly labeled and ready to turn in

Arrival and Departure Information

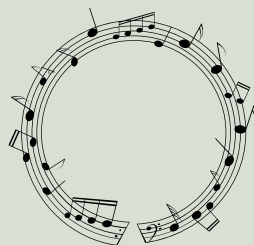
First Day of Camp-July 16th

See email body for your specific check in time.



Last Day of Camp July 29th- Final Concert 5pm:

The Final Concert will be held at 5pm on campus. Guests may arrive anytime after 3:00pm to visit and load luggage. Please do not arrive early as our program will still be in session and the front gate will be closed.



Carpool

If you are interested in carpooling, please let us know and we will email your name, contact info, and location to everyone on our Advanced Session roster.

If you have not been to the camp before, please bring a copy or screen shot of these directions with you.
GPS is questionable in our area.

Driving Directions to Camp

Physical address: 33500 Music Camp Rd, Arrowbear Lk, CA 92382

From I-210 in Highland, take HWY 330 towards Big Bear. After winding up the mountain road, continue through the small towns of Running Springs and Arrowbear.

Turn right at the second Arrowbear Drive (near the corner you will see Victoria's Family Restaurant).

If you reach a sign for Green Valley or Snow Valley Ski Resort, you have gone too far.

Stay to the left of the small pond and continue up Music Camp Road until you reach the camp. We have a large, green, and brown "Arrowbear Music Camp" sign at the entrance to the camp.

Follow signs to the check-in station.

Tuition Balance

Your remaining balance must be finalized by July 11th.

Medications

All medications must be turned into the Camp Health Supervisor at check-in. This includes over the counter medications and is for legal compliance and camp safety. Medications **MUST** be in their original, labeled containers or they will not be administered. Alternatively, if you transfer pills into daily pill containers, make sure to provide the original prescription bottle.



General Camp information:

Communication with campers- Old fashioned snail mail

Campers love to receive mail while at camp!

Please mail to-

Camper's Name

c/o Arrowbear Music Camp

PO Box 180

Running Springs, CA 92382

*Any mail that arrives after the session ends
will be mailed to camper.*

Family and friends are welcome to leave mail with the camp office to be placed in the camper's mailbox on a specific day.

One way emails through your online account

Log into the parent portal from our website. Open menu from top left, and choose message center from the drop down.

Emails will be printed and delivered to your camper's mail box daily. Please note, emails are one way and will not be returned.

Messages

Messages received via email, text, or phone call will be placed in the campers' mail box daily.

Cell Phones

We highly, highly, highly recommend that you leave your cell phone and other electronic devices at home.

Phones really do distract from total involvement in the camp environment. Why not let this week be your chance to sing, make friends, enjoy the mountains, and learn as much as you can? Don't waste the money and time you put into being here by mentally being somewhere else. The camp does have an office phone for those who need to make an occasional quick call home.

Daily Camp Photos:

Starting on Monday night (July 17th) we will upload session photos to the parent portal. Check back daily at approximately 7pm for new uploads. Log into your account and go to photo gallery from the drop down menu on the far left.



Commemorative Photo and Camp Roster (the 'note')

At the end of the session we will provide all the campers with a group photo and roster including contact information for all campers and staff. If you wish to have your contact information left off the roster, please let us know.

Arrowbear Store:

During free time we sell a small assortment of snacks and camp gear. All money must be turned in to the camp for safekeeping. A debit system will be used for purchases and the remaining balance will be returned on the last day. We accept cash, check or money order made out to Arrowbear Music Camp, or credit card through your account. For a one week high school session we recommend \$15-\$50.

To add money online: Log into your account and from the left hand side menu, choose "camp store".

Prices-

Snacks/Soda \$1-\$4

T-shirts \$15

Sweatshirts \$25-\$30

Other camp gear \$3-\$25

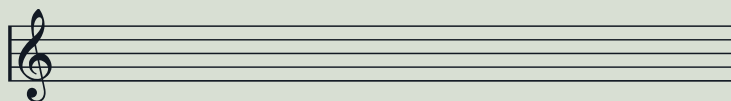
The camp store will be open before and after the concert. At this time we will accept credit card payments.

Visitors

Please check in with the office if you plan to visit.

Thank you

We are looking forward to seeing you all!



→ **Advanced Session Packing List** ←

Clothing

Enough comfortable outdoor clothing for 2 weeks (we have 1 cold water washer, detergent pods, and drying rack)

Example:

- Jeans/ long pants
- Shorts
- T-shirts/ tank tops
- Sweat shirt/ sweater
- Pajamas
- Socks
- Underwear
- Closed-toe shoes (hiking boots/ tennis shoes)
- Bag or collapsible hamper to hold dirty clothing
- Concert clothes: slacks, khakis or skirts; blouse, polo, or other collared shirt

Toiletries

- Towel and washcloth for shower
- Shower sandals (flip flops)
- Toothbrush, toothpaste, and floss
- Shampoo/conditioner and soap
- Sunscreen and chapstick
- Bug repellent
- Any other personal items you may need

Bedding

- Warm Sleeping Bag- temps may drop below the 40's- please pack accordingly
- Pillow

Music related

- Instrument
- Pencils- soft lead
- Eraser
- If you plan on performing in our Musicale (recital) or Coconut Bear (talent show) bring any music you may need, including accompaniment
- Any additional instruments you play that you may like to use for free time or optional performance time

Misc.

- Reusable water Bottle (or purchase one from the camp store)
- Flashlight or headlamp

Optional items

- Fitted sheet (to cover vinyl mattress 72"x30")
- Blankets
- Swimsuit
- Pool towel
- Hat
- Sunglasses
- Hiking boots/ hiking gear
- Sandals
- Snack food in a labeled container
- Stamps and envelopes
- White clothing for tie-dying/Dark fabric for bleach dying
- Camera
- Books/ magazines
- drawing supplies
- headphone/music player



Make sure to label all belongings with the camper's name. Aside from an instrument, please leave all valuables at home. Arrowbear Music Camp will not be held responsible for lost money or valuables.